

Power You Can
Depend On



MRXF Series

Valve Regulated Lead Acid

— Optimized UPS Configuration



WWW.CDTROJAN.CN

MRXF Series

TRUE FRONT ACCESS HIGH RATE MAX

- UPS 12-410 MRXF
- UPS 12-615 MRXF
- UPS 12-700 MRXF
- UPS 12-830 MRXF
- UPS 12-1000 MRXF



Valve Regulated Lead Acid (VRLA) Battery Series Design For UPS Standby Power Applications

Applications

- Data Centers
- Network Operations Centers
- Industrial Process Control Facilities
- Internet Housing Sites
- Semiconductor Manufacturing
- Banks & Financial Markets
- Power Generation Plants
- Hospitals & Testing Laboratories
- Emergency 911 Response Centers

Features and benefits

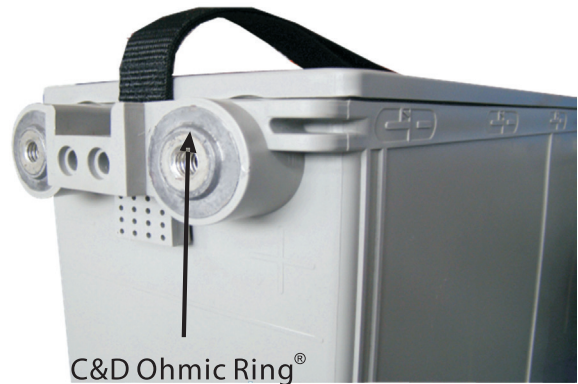
- 12 years design life
- Eurobat Classification: Long Life
- True Front Access threaded copper alloy inserts, for reduced maintenance and increased safety
- Terminal versatility-ease of diagnostic readings with C&D Ohmic Ring®
- Innovative front terminal design maximizing energy density with direct connect extrusion fusion weld technology
- Reduced headspace driving higher energy density, in cabinet or rack applications
- Removable handles for ease of installation
- Thermally welded case-to-cover bond to ensure a leak-proof sea
- Flame-retardant polypropylene case and cover compliant with UL94 V-0 with an Oxygen Limiting Index of greater than 28
- Absorbent Glass Mat (AGM) technology for efficient gas recombination of over 99%
- Flame-arresting, one-way pressure-relief vent for safety and long life
- Complies with UL 1778, 924, 1989 and 94 V-0, BS6290-4, IEC60896
- UL-recognized component
- Multicell design for ease of installation and maintenance
- Not restricted for air transport-Complies with IATA/ICAO Special Provision A67
- Not restricted for surface transport-Classified as non-hazardous material as related to DOT-CFR Title 49 parts 171-189
- 3 Year Full Warranty (refer to warranty card, 41-9027)
- Not restricted for water transport -Classified as non-hazardous material IMDG Amendment 27
- Manufactured in accordance with ISO 9001, ISO 14001, ISO 45001 and ISO 50001
- Designed to be compliant with international standard IEC 60896-21/22

Technical Data

| Model | Voltage | IEC Capacity/Ah (C10, 1.8V @20°C) | Capacity/Ah (C10, 1.8V @25°C) | Capacity/Ah (C20, 1.75V @25°C) | Constant Power Discharge Ratings - Watts Per Cell @ 77°F (25°C) | | | | | | | | | |
|------------------|---------|-----------------------------------|-------------------------------|--------------------------------|---|--------|--------|-------|-------|-------|-------|-------|-------|-------|
| | | | | | Operating Time (in minutes) to 1.67 Volts per Cell | | | | | | | | | |
| | | | | | 5 | 10 | 15 | 20 | 25 | 30 | 40 | 50 | 60 | 90 |
| UPS 12-410 MRXF | 12 | 100 | 102 | 109 | 701.1 | 514.6 | 410.0 | 339.5 | 288.2 | 256.0 | 203.1 | 169.8 | 146.6 | 105.1 |
| UPS 12-615 MRXF | 12 | 160 | 163 | 172 | 1027.1 | 771.8 | 615.0 | 513.8 | 439.4 | 392.5 | 318.8 | 271.3 | 237.8 | 171.5 |
| UPS 12-700 MRXF | 12 | 185 | 188 | 201 | 1117.8 | 866.0 | 700.0 | 583.0 | 503.6 | 453.0 | 368.1 | 313.3 | 274.7 | 199.3 |
| UPS 12-830 MRXF | 12 | 229 | 236 | 251 | 1328.0 | 1029.2 | 830.0 | 713.0 | 624.8 | 567.9 | 460.1 | 390.7 | 341.9 | 242.8 |
| UPS 12-1000 MRXF | 12 | 234 | 239 | 254 | 1520.0 | 1210.0 | 1000.0 | 823.7 | 696.0 | 616.2 | 491.2 | 412.0 | 356.9 | 256.7 |

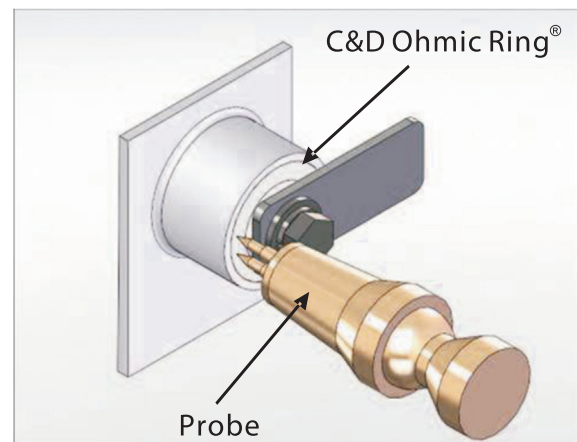
INTRODUCING A UPS FRONT ACCESS BATTERY WITH TRUE FRONT ACCESS TERMINALS

- Direct welded front facing terminals
 - Uses proven Extrusion Fusion welding process for high reliability
 - Provides efficient current path for excellent high rate performance
 - No bolted on "L" brackets which try to make a top terminals battery into a front terminal battery
 - One less bolted connection that requires maintenance, builds up resistance, and can lead to poor string performance
- Designed as a UPS battery from the ground up to efficiently handle high rate discharges
 - Not a converted telecom front access battery
- Raised Terminals for ease of maintenance and access to C&D Ohmic Ring®



C&D Ohmic Ring®

- Large surface area for direct access to terminals for accurate ohmic measurements
 - No more taking readings from bus bars or hardware which can lead to substantial errors
- Provides consistent and accurate measuring location
 - No guessing to what point was the base line reading taken from
- Ideally sized for use with standard monitor probes on fully installed systems
- The Ohmic Ring design is the only terminal configuration in which micro-ohm connection resistances can be taken as required by standard maintenance programs.



The True Front Access UPS Battery - The Better UPS Battery Solution

- Eliminate hard to service top terminal batteries with a full front access solution
- Higher watts per cell allows a reduction of a parallel string for most common UPS configurations, providing a reduced footprint solution
- Maintenance is significantly easier and safer with all required service points front accessible - reducing both time and cost of periodic servicing
- As a 12V battery design, the UPS 12-410 MRXF, UPS 12-615 MRXF, UPS 12-700 MRXF, UPS 12-830 MRXF and UPS 12-1000 MRXF easily integrate with existing battery monitoring equipment

MRXF Series

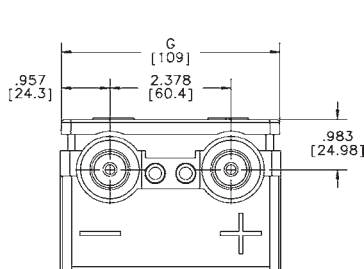
Specifications

| | |
|---|--|
| Operating Temperature Range with temperature compensation | Discharge: -40°F (-40°C) to +160°F (71°C) Charge: -10°F (-23°C) to +140°F (60°C) |
| Nominal Operating Temperature Range | +74°F (23°C) to +80°F (27°C) |
| Recommended Maximum Charging Current Limit | C/5 amperes @ 20hr rate |
| Float Charging Voltage | 13.5 to 13.8 VDC average per 12V unit @ 77°F (25°C)(Recommendation:13.65V per unit) |
| Maximum AC Ripple (Charger) | 0.5% RMS or 1.5% P-P of float charge voltage recommended for best results. Max voltage allowed = 1 4% RMS (4% P-P), Max current allowed = C/20 A RMS |
| Self Discharge | Battery can be stored up to 4 months at 77°F (25°C) before a freshening charge is required. Batteries stored at temperatures greater than 77°F (25°C) will require recharge sooner than batteries stored at lower temperatures. See C&D brochure 41-7272, Self-Discharge and Inventory Control for details. |
| Terminal: Inserted - Inter-unit connector provided | Threaded copper alloy insert terminal to accept: M6 bolt (UPS 12-410 MRXF) M8 bolt (UPS 12-615 MRXF, UPS 12-700 MRXF, UPS 12-830 MRXF, UPS 12-1000 MRXF) |
| Terminal Hardware Initial Torque | 110 in.-lbs (12.4 N-m) for UPS 12-410 MRXF 160 in.-lbs. (18 N-m) for UPS 12-615 MRXF, UPS 12-700 MRXF, UPS 12-830 MRXF, UPS 12-1000 MRXF |

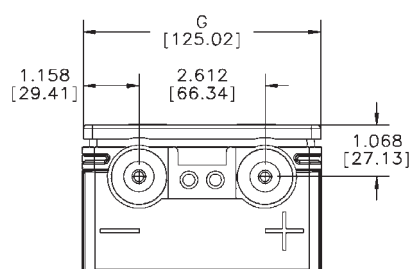
| Battery Model | Voltage Per Unit | Ampere Hours Capacity 10 Hour Rate @ 68°F (20°C) to 1.8EPV per cell | Ampere Hours Capacity 10 Hour Rate @ 77°F (25°C) to 1.8EPV per cell | Ampere Hours Capacity 20 Hour Rate @ 77°F (25°C) to 1.75EPV per cell | IEC Short Circuit Current (A) | IEC Resistance (mOhms) | Weight(kg) |
|------------------|------------------|---|---|--|-------------------------------|------------------------|------------|
| UPS 12-410 MRXF | 12V | 100 | 102 | 109 | 2860 | 4.4 | 37.1 |
| UPS 12-615 MRXF | 12V | 160 | 163 | 172 | 3700 | 3.4 | 55.2 |
| UPS 12-700 MRXF | 12V | 185 | 188 | 201 | 4400 | 2.8 | 64.9 |
| UPS 12-830 MRXF | 12V | 229 | 236 | 251 | 5376 | 2.31 | 75.5 |
| UPS 12-1000 MRXF | 12V | 234 | 239 | 254 | 5540 | 2.3 | 84.1 |

* Per IEEE 1188-2005, Internal ohmic values are useful as a trending tool. To use these readings effectively, accurate baseline readings should be taken after about six months of battery operation. Internal ohmic readings taken without the benefit of baseline data may be difficult to interpret and of limited value. Values are provided for reference only.

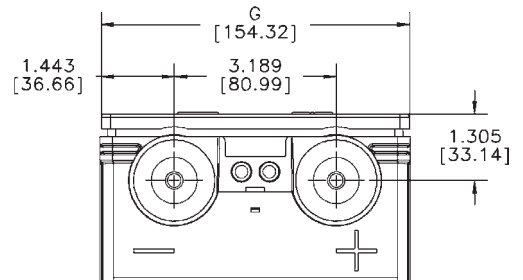
Detail of Terminal



UPS 12-410 MRXF

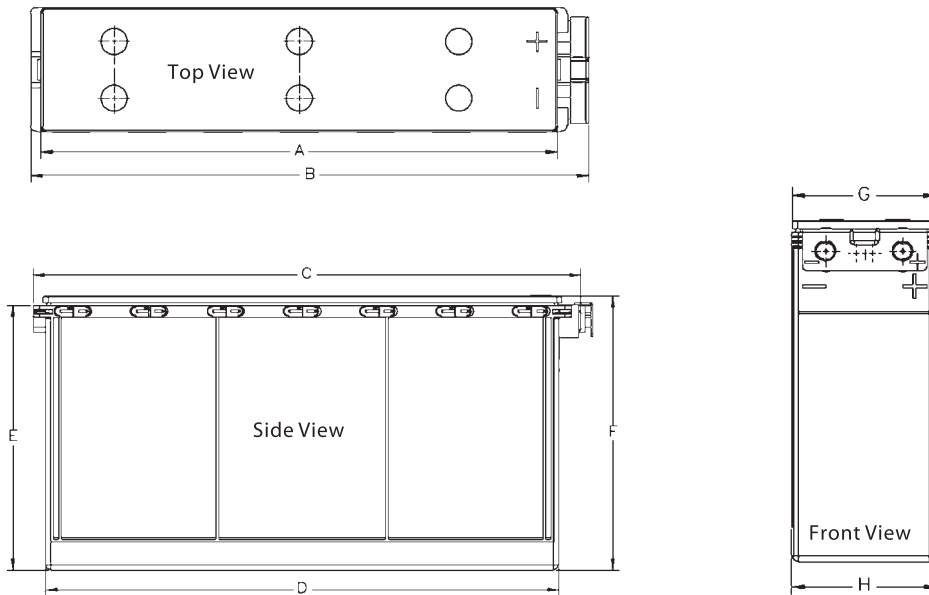


UPS 12-615 MRXF
UPS 12-700 MRXF



UPS 12-830 MRXF
UPS 12-1000 MRXF

Dimensions



| Model | A | | B | | C | | D | | E | | F | | G | | H | |
|------------------|------|-------|------|-------|------|-------|------|-------|------|-------|------|-------|-----|-------|-----|-------|
| | in | mm | in | mm | in | mm | in | mm | in | mm | in | mm | in | mm | in | mm |
| UPS 12-410 MRXF | 18.6 | 473.1 | 20.1 | 510.5 | 19.6 | 498.3 | 18.5 | 469.5 | 8.5 | 215.2 | 9.1 | 231.4 | 4.3 | 109.0 | 4.3 | 108.0 |
| UPS 12-615 MRXF | 20.3 | 516.9 | 22.4 | 559 | 21.5 | 546.5 | 20.2 | 512.2 | 10.6 | 268.9 | 11.0 | 278.7 | 4.9 | 125.0 | 4.9 | 123.4 |
| UPS 12-700 MRXF | 20.3 | 516.9 | 22.4 | 559 | 21.5 | 546.5 | 20.2 | 512.2 | 12.2 | 310.8 | 12.7 | 322.1 | 4.9 | 125.0 | 4.9 | 123.4 |
| UPS 12-830 MRXF | 20.3 | 516.9 | 22.4 | 559 | 21.5 | 546.5 | 20.2 | 512.2 | 12.2 | 310.8 | 12.7 | 322.1 | 6.1 | 154.3 | 6.0 | 152.7 |
| UPS 12-1000 MRXF | 20.3 | 516.9 | 22.4 | 559 | 21.5 | 546.5 | 20.2 | 512.2 | 12.2 | 310.8 | 12.7 | 322.1 | 6.1 | 154.3 | 6.0 | 152.7 |

* All dimensions in inches and (millimeters). All dimensions are for reference only. Contact a C&D Representative for complete dimensions information.

UPS 12- 410 MRXF

| Constant Power Discharge Ratings - Watts Per Cell @ 77°F (25°C) | | | | | | | | | | | | |
|---|-------|-------|-------|-------|-------|-------|-------|-------|-------|-------|-------|--|
| Operating Time to End Point Voltage (in minutes) | | | | | | | | | | | | |
| EPV | 5 | 10 | 15 | 20 | 25 | 30 | 40 | 45 | 50 | 60 | 90 | |
| 1.75 | 660.1 | 484.4 | 386.0 | 321.2 | 273.8 | 244.0 | 195.3 | 178.3 | 164.3 | 142.7 | 102.4 | |
| 1.70 | 690.8 | 507.0 | 404.0 | 334.4 | 283.8 | 252.0 | 200.5 | 182.6 | 167.9 | 145.3 | 104.2 | |
| 1.67 | 701.1 | 514.6 | 410.0 | 339.5 | 288.2 | 256.0 | 203.1 | 184.8 | 169.8 | 146.6 | 105.1 | |
| 1.65 | 709.7 | 520.8 | 415.0 | 344.1 | 292.5 | 260.0 | 205.7 | 186.9 | 171.6 | 147.9 | 106.0 | |

| Constant Current Discharge Ratings - Amperes @ 77°F (25°C) | | | | | | | | | | | |
|--|----|------|------|------|------|------|-----|------|------|------|--|
| Operating Time to End Point Voltage (in hours) | | | | | | | | | | | |
| EPV | 1 | 2 | 3 | 5 | 8 | 10 | 12 | 20 | 24 | 72 | |
| 1.85 | 67 | 38.4 | 27.7 | 18.5 | 12.0 | 9.7 | 8.2 | 5.07 | 4.28 | 1.50 | |
| 1.80 | 71 | 40.5 | 29.2 | 19.4 | 12.6 | 10.2 | 8.6 | 5.34 | 4.50 | 1.58 | |
| 1.75 | 73 | 41.5 | 29.8 | 19.8 | 12.8 | 10.4 | 8.8 | 5.46 | 4.61 | 1.61 | |

MRXF Series

UPS 12- 615 MRXF

| Constant Power Discharge Ratings - Watts Per Cell @ 77°F (25°C) | | | | | | | | | | | |
|---|--------|-------|-------|-------|-------|-------|-------|-------|-------|-------|-------|
| Operating Time to End Point Voltage (in minutes) | | | | | | | | | | | |
| EPV | 5 | 10 | 15 | 20 | 25 | 30 | 40 | 45 | 50 | 60 | 90 |
| 1.75 | 973.6 | 731.7 | 583.0 | 494.2 | 428.2 | 386.0 | 313.6 | 288.0 | 266.9 | 234.0 | 169.0 |
| 1.70 | 1010.4 | 759.3 | 605.0 | 508.0 | 436.4 | 391.0 | 317.4 | 291.4 | 269.9 | 236.5 | 170.7 |
| 1.67 | 1027.1 | 771.8 | 615.0 | 513.8 | 439.4 | 392.5 | 318.8 | 292.8 | 271.3 | 237.8 | 171.5 |
| 1.65 | 1035.4 | 778.1 | 620.0 | 516.8 | 441.2 | 393.5 | 319.5 | 293.4 | 271.8 | 238.2 | 172.0 |

| Constant Current Discharge Ratings - Amperes @ 77°F (25°C) | | | | | | | | | | | |
|--|-----|------|------|------|------|------|------|------|------|------|--|
| Operating Time to End Point Voltage (in hours) | | | | | | | | | | | |
| EPV | 1 | 2 | 3 | 5 | 8 | 10 | 12 | 20 | 24 | 72 | |
| 1.85 | 109 | 61.8 | 44.0 | 28.7 | 19.0 | 15.5 | 13.1 | 8.10 | 6.81 | 2.38 | |
| 1.80 | 118 | 65.8 | 46.7 | 30.4 | 20.1 | 16.3 | 13.8 | 8.47 | 7.12 | 2.49 | |
| 1.75 | 120 | 67.0 | 47.5 | 30.9 | 20.3 | 16.5 | 13.9 | 8.61 | 7.26 | 2.54 | |

UPS 12-700 MRXF

| Constant Power Discharge Ratings - Watts Per Cell @ 77°F (25°C) | | | | | | | | | | | |
|---|--------|-------|-------|-------|-------|-------|-------|-------|-------|-------|-------|
| Operating Time to End Point Voltage (in minutes) | | | | | | | | | | | |
| EPV | 5 | 10 | 15 | 20 | 25 | 30 | 40 | 45 | 50 | 60 | 90 |
| 1.75 | 1020.6 | 780.0 | 630.0 | 544.1 | 479.1 | 437.0 | 358.7 | 330.8 | 307.7 | 271.5 | 196.5 |
| 1.70 | 1083.8 | 839.6 | 669.0 | 570.2 | 496.4 | 449.0 | 365.5 | 336.0 | 311.6 | 273.5 | 198.6 |
| 1.67 | 1117.8 | 866.0 | 700.0 | 583.0 | 503.6 | 453.0 | 368.1 | 338.1 | 313.3 | 274.7 | 199.3 |
| 1.65 | 1134.0 | 878.5 | 703.0 | 590.1 | 508.7 | 457.0 | 370.3 | 339.7 | 314.5 | 275.2 | 199.7 |

| Constant Current Discharge Ratings - Amperes @ 77°F (25°C) | | | | | | | | | | | |
|--|-----|------|------|------|------|------|------|-------|------|------|--|
| Operating Time to End Point Voltage (in hours) | | | | | | | | | | | |
| EPV | 1 | 2 | 3 | 5 | 8 | 10 | 12 | 20 | 24 | 72 | |
| 1.85 | 121 | 71.4 | 51.1 | 33.5 | 22.1 | 18.0 | 15.2 | 9.48 | 8.01 | 2.80 | |
| 1.80 | 130 | 75.1 | 53.9 | 35.2 | 23.2 | 18.8 | 15.9 | 9.88 | 8.34 | 2.92 | |
| 1.75 | 134 | 76.6 | 54.6 | 35.7 | 23.6 | 19.2 | 16.2 | 10.07 | 8.51 | 2.98 | |

UPS 12-830 MRXF

| Constant Power Discharge Ratings - Watts Per Cell @ 77°F (25°C) | | | | | | | | | | | |
|---|--------|--------|-------|-------|-------|-------|-------|-------|-------|-------|-------|
| Operating Time to End Point Voltage (in minutes) | | | | | | | | | | | |
| EPV | 5 | 10 | 15 | 20 | 25 | 30 | 40 | 45 | 50 | 60 | 90 |
| 1.75 | 1206.3 | 934.9 | 770.0 | 661.3 | 590.1 | 543.5 | 444.9 | 409.9 | 381.0 | 335.6 | 238.8 |
| 1.70 | 1268.2 | 995.0 | 800.5 | 688.9 | 609.9 | 558.5 | 454.2 | 417.3 | 386.9 | 339.4 | 241.3 |
| 1.67 | 1328.0 | 1029.2 | 830.0 | 713.0 | 624.8 | 567.9 | 460.1 | 422.0 | 390.7 | 341.9 | 242.8 |
| 1.65 | 1334.2 | 1034.0 | 833.9 | 717.5 | 629.7 | 573.0 | 463.3 | 424.7 | 392.9 | 343.4 | 244.0 |

| Constant Current Discharge Ratings - Amperes @ 77°F (25°C) | | | | | | | | | | | |
|--|-----|------|------|------|------|------|------|-------|-------|------|--|
| Operating Time to End Point Voltage (in hours) | | | | | | | | | | | |
| EPV | 1 | 2 | 3 | 5 | 8 | 10 | 12 | 20 | 24 | 72 | |
| 1.85 | 156 | 90.1 | 65.2 | 42.3 | 27.8 | 22.7 | 19.2 | 11.90 | 10.00 | 3.50 | |
| 1.80 | 164 | 94.0 | 67.5 | 43.8 | 29.1 | 23.6 | 20.1 | 12.40 | 10.41 | 3.64 | |
| 1.75 | 169 | 96.2 | 68.4 | 44.4 | 29.7 | 24.2 | 20.5 | 12.51 | 10.59 | 3.71 | |

UPS 12-1000 MRXF

| Constant Power Discharge Ratings - Watts Per Cell @ 77°F (25°C) | | | | | | | | | | | |
|---|--------|--------|--------|-------|-------|-------|-------|-------|-------|-------|-------|
| Operating Time to End Point Voltage (in minutes) | | | | | | | | | | | |
| EPV | 5 | 10 | 15 | 20 | 25 | 30 | 40 | 45 | 50 | 60 | 90 |
| 1.75 | 1379.8 | 1098.4 | 907.8 | 763.7 | 657.3 | 589.7 | 472.2 | 431.2 | 397.5 | 345.3 | 250.1 |
| 1.70 | 1469.0 | 1169.4 | 983.0 | 801.7 | 681.6 | 606.1 | 484.4 | 442.0 | 407.1 | 353.2 | 254.7 |
| 1.67 | 1520.0 | 1210.0 | 1000.0 | 823.7 | 696.0 | 616.2 | 491.2 | 447.7 | 412.0 | 356.9 | 256.7 |
| 1.65 | 1541.9 | 1227.5 | 1014.4 | 834.1 | 703.7 | 622.3 | 495.5 | 451.4 | 415.2 | 359.4 | 257.9 |

| Constant Current Discharge Ratings - Amperes @ 77°F (25°C) | | | | | | | | | | | |
|--|-----|-------|------|------|------|------|------|-------|-------|------|--|
| Operating Time to End Point Voltage (in hours) | | | | | | | | | | | |
| EPV | 1 | 2 | 3 | 5 | 8 | 10 | 12 | 20 | 24 | 72 | |
| 1.85 | 168 | 96.1 | 67.9 | 43.2 | 28.1 | 22.9 | 19.4 | 12.05 | 10.18 | 3.56 | |
| 1.80 | 181 | 102.0 | 71.3 | 45.0 | 29.3 | 23.9 | 20.2 | 12.50 | 10.60 | 3.71 | |
| 1.75 | 188 | 104.1 | 72.1 | 45.4 | 29.7 | 24.3 | 20.6 | 12.70 | 10.70 | 3.75 | |

Note: Specifications subject to change without notification.

Batteries to be mounted with 15 mm spacing minimum and free air ventilation.

Above ratings do not include interunit connector voltage drops.

The design life listed indicates the service life under ideal service conditions. Changes in service conditions do not affect the design life, but the actual service life will be shorter than the design life.



TECHNOLOGIES

Contact us

Headquarters

C&D Technologies, Inc.
200 Precision Road
Horsham, PA 19044 USA

Europe

C&D Technologies (UK) Limited
Unit 25, Romsey Industrial Estate, Greatbridge Road
ROMSEY, Hampshire, SO51 0HR, UK
Office: +44 (0) 1794 518 173
E-mail: Gdaily@cdtrojan.com

Middle East & Africa

C&D TECHNOLOGIES (UK) LIMITED
LOB 15 – OFFICE 413
PO BOX 263116
JEBEL ALI FREE ZONE
DUBAI – UNITED ARAB EMIRATES
PH: +971 5045 494 79
E-mail: phockings@cdtrojan.com

C&D Tech Power Solutions (India) Private Limited

NEW NUMBER 39, OLD NUMBER 15, GROUND FLOOR, AGASTHIAR STREET,
EAST TAMBARAM, CHENNAI 600059.
Tel:(91) 98400 86199
E-mail: ishantharaj@cdtrojan.com.cn

C&D Technologies (Hong Kong) Ltd.

Tel: (852) 2119 9870
Fax: (852) 2117 0342
E-mail: Bhui@cdtrojan.com

C&D Tech (Singapore) Pte Ltd.

Tel: (65) 6291 1031
Fax: (65) 6291 0767
E-mail: Bhui@cdtrojan.com

C&D Trojan (Shanghai) Energy Technologies Co., Ltd.

Tel: 400-678-3721

C&D Trojan (Shanghai) Power Technologies Co., Ltd.

No.55 Liandu Road,Spark Development Zone,Shanghai, China
Tel: (86) 21 3711 1222

C&D Jiangsu Technologies Co., Ltd.

Circular Economy Industrial Park
Pizhou High-tech Industrial Development Zone,
Jiangsu Prvince China 221300
Tel: (86) 516 8687 9857

Website

www.cdtrojan.cn

China Service Hotline: 400-678-3721

C&D reserves the right to revise the data and information provided in this catalogue.