

*Power You Can  
Depend On*



# PLP Series

## Valve Regulated Lead Acid Battery

— Designed for UPS Standby Power Applications



WWW.CDTROJAN.CN

# PLP Series

PURE Pb+

## PURE LEAD PLUS

### Valve Regulated Lead Acid Battery

Designed for UPS Standby Power Applications



### Applications

- Data Centers
- Network Operation Centers
- Industrial Process Control Facilities
- Internet Housing Sites
- Semiconductor Manufacturing
- Banks and Financial Markets
- Power Generation Plants
- Hospital and Testing Laboratories
- Emergency Response Center

### Features and Benefits

- 15 year design life
- Eurobat classification: > 12 Years, Very Long Life
- Pure Lead Paste for long life, extreme high rate and stable performance
- Absorbent Glass Mat (AGM) technology for efficient gas recombination of up to 99% and freedom from electrolyte maintenance
- UL Recognized Flame-arresting vents in each cell for safety and long life
- Flame retardant polypropylene case and cover compliant with UL94 V-0
- Designed with the same recombination, thermal runaway prevention, gassing and flame-retardant characteristics of the Bellcore 4228 compliant Dynasty Telecom products
- Designed to be compliant with international standard IEC 60896-21/22
- C&D's Long-Life Alloy having very low calcium levels in the industry -minimizing grid growth, reducing gassing, and extending battery life
- C&D's plate processing technology for high active materials utilization- result in high energy density and low flow currents
- Thermally welded and Helium leak tested case-to-cover bond to ensure a robust leak proof seal
- Manufactured in accordance with ISO 9001, ISO 14001, ISO 45001 and ISO 50001
- Not restricted for air transport -Complies with IATA/ICAO Special Provisions A67
- Not restricted for surface transport -Classified as non-hazardous material as related to DOT-CFR Title 49 parts 171-189
- Not restricted for water transport -Classified as non-hazardous material per IMDG Amendment 27.

### Specifications

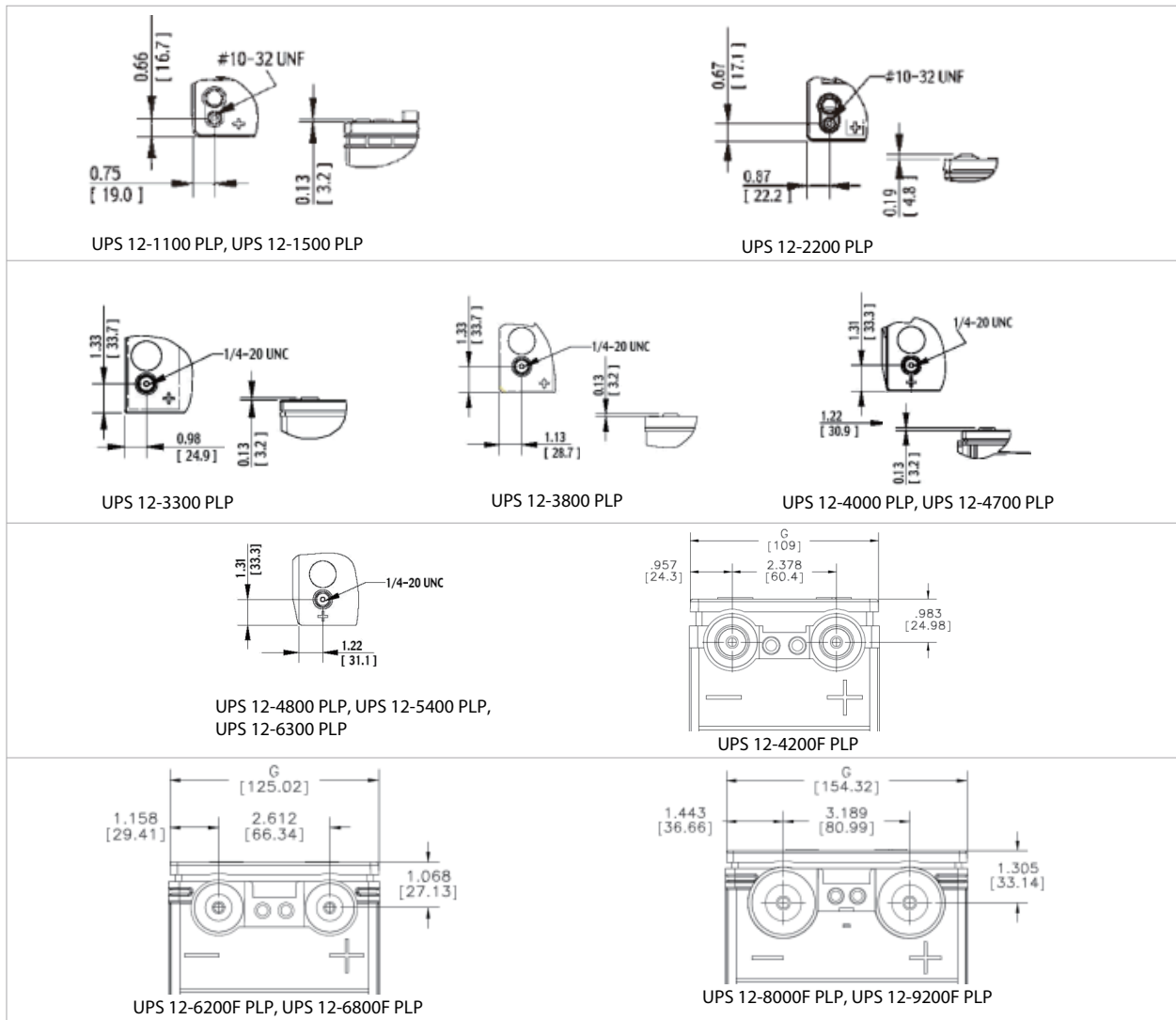
Model	V	C20 (Ah) 1.75EPV,25°C	C10 (Ah) 1.80EPV,20°C	C8 (Ah) 1.75EPV,25°C	5min Watt/cell @ 1.67EPV	Dimensions/mm (L*W*H*total Height)				Weight/ kg	Terminal Type (Bolt)
UPS 12-1100 PLP	12	34	30	30	177.9	197	132	166	173	10.7	Inserted(#10-32 UNF)
UPS 12-1500 PLP	12	36	32	33	249.0	197	132	166	173	12.4	Inserted(#10-32 UNF)
UPS 12-2200 PLP	12	56	49.5	50	371.4	242	142	200	205	19.0	Inserted(#10-32 UNF)
UPS 12-3300 PLP	12	84	76.6	79	552.4	273	173	201	204	27.0	Inserted (1/4-20 UNC)
UPS 12-3800 PLP	12	102	90	91	643.0	319	173	203	206	31.5	Inserted (1/4-20 UNC)
UPS 12-4000 PLP	12	110	97	99	667.4	341	173	213	216	35.3	Inserted (1/4-20 UNC)
UPS 12-4700 PLP	12	114	103	106	779.6	341	173	215	218	38.0	Inserted (1/4-20 UNC)
UPS 12-4800 PLP	12	150	134	138	782.0	345	173	275	278	46.6	Inserted (1/4-20 UNC)
UPS 12-5400 PLP	12	154	137	141	883.1	345	173	275	278	48.6	Inserted (1/4-20 UNC)
UPS 12-6300 PLP	12	140	128	131	1032.7	345	173	275	278	52.9	Inserted (1/4-20 UNC)
UPS 12-4200F PLP	12	110	99	102	711.6	511	109	231	231	37.1	Inserted (M6)
UPS 12-6200F PLP	12	172	158	162	1042.5	559	125	278	278	55.2	Inserted (M8)
UPS 12-6800F PLP	12	202	182	189	1134.6	559	125	322	322	64.9	Inserted (M8)
UPS 12-8000F PLP	12	252	230	238	1347.9	559	154	322	322	75.5	Inserted (M8)
UPS 12-9200F PLP	12	254	231	238	1542.8	559	154	322	322	84.1	Inserted (M8)
Operating Temperature Range with temperature compensation				Discharge: -40°F (-40°C) to +160°F (71°C) Charge: -10°F (-23°C) to +140°F (60°C)							
Nominal Operating Temperature Range				+74°F (23°C) to +80°F (27°C)							
Recommended Maximum Charging Current Limit				C/5 amperes @ 20hr rate							
Float Charging Voltage				13.65 ± 0.15 VDC average per 12V unit							
Maximum AC Ripple (Charger)				0.5% RMS or 1.5% P-P of float charge voltage recommended for best results. Max voltage allowed = 1.4% RMS (4% P-P) Max current allowed = C/20 A RMS							
Self Discharge				Battery can be stored up to 4 months at 77°F (25°C) before a refreshing charge is required. Batteries stored at temperatures greater than 77°F (25°C) will require recharge sooner than batteries stored at lower temperatures. See C&D brochure 41-7272, Self-Discharge and Inventory Control for details.							
Equalize charge and cycle service voltage				14.40 to 14.80 VDC average per 12V unit @ 77°F (25°C)							

\*All dimensions are for reference only. Model name with "F" means Front Access battery. Contact a C&D Representative for complete dimensional information.

## Specifications

Model	Cells Per Unit	Maximum Discharge Current (Amps)	IEC Short Current (Amps)	IEC Resistance (mΩ)
UPS 12-1100 PLP	6	300	1003	12.35
UPS 12-1500 PLP	6	300	1475	8.45
UPS 12-2200 PLP	6	300	1985	6.37
UPS 12-3300 PLP	6	800	2381	5.29
UPS 12-3800 PLP	6	800	2734	4.65
UPS 12-4000 PLP	6	800	3199	4.06
UPS 12-4700 PLP	6	800	3350	3.77
UPS 12-4800 PLP	6	800	3160	3.96
UPS 12-5400 PLP	6	800	3613	3.48
UPS 12-6300 PLP	6	800	4146	2.99
UPS 12-4200F PLP	6	800	2864	4.40
UPS 12-6200F PLP	6	800	3698	3.40
UPS 12-6800F PLP	6	900	4400	2.80
UPS 12-8000F PLP	6	1200	5376	2.31
UPS 12-9200F PLP	6	1200	5543	2.28

## Battery Terminations



Note: Specifications subject to change without notification.  
 Batteries to be mounted with 15 mm spacing minimum and free air ventilation.  
 The design life listed indicates the service life under ideal service conditions.  
 Changes in service conditions do not affect the design life, but the actual service life will be shorter than the design life.

## TOP TERMINAL



### UPS 12-1100 PLP

END POINT VOLTS/CELL	Constant Power Discharge Table - Watts Per Cell @ 25°C (77°F)											
	Operating Time to End Point Voltage											
	2min	3min	4min	5 min	10 min	15 min	20 min	25 min	30 min	45 min	60 min	90 min
1.85	-	-	-	143.9	105.8	86.4	72.7	63.6	57.0	44.2	36.9	27.4
1.80	-	-	-	158.7	117.7	95.2	79.3	68.8	61.3	47.0	39.0	28.6
1.75	-	-	-	167.5	127.0	99.5	82.8	71.8	63.9	48.6	40.0	29.0
1.70	215.3	205.9	185.1	173.9	131.7	103.3	85.5	73.7	65.4	49.4	40.5	29.3
1.67	220.1	211.2	190.0	177.9	134.0	105.7	87.1	74.9	66.3	49.9	40.8	29.4
1.65	223.4	214.1	193.7	180.6	136.5	107.3	88.2	75.7	66.9	50.2	41.0	29.6

END POINT VOLTS/CELL	Constant Current Discharge Table - Amps @ 25°C (77°F)											
	Operating Time to End Point Voltage											
	5 min	10 min	15 min	30 min	60 min	2 hr	3 hr	5 hr	8 hr	10 hr	12 hr	20 hr
1.90	68.2	52.4	42.2	28.4	18.2	10.5	7.5	4.9	3.3	2.7	2.3	1.5
1.85	80.0	61.1	48.5	31.4	20.1	11.4	8.2	5.4	3.6	2.9	2.5	1.6
1.80	88.6	68.0	53.7	33.6	21.0	11.9	8.5	5.6	3.7	3.1	2.6	1.7
1.75	93.3	71.3	56.3	34.9	21.5	12.1	8.6	5.7	3.8	3.1	2.6	1.7

### UPS 12-1500 PLP

END POINT VOLTS/CELL	Constant Power Discharge Table - Watts Per Cell @ 25°C (77°F)											
	Operating Time to End Point Voltage											
	2min	3min	4min	5 min	10 min	15 min	20 min	25 min	30 min	45 min	60 min	90 min
1.85	-	-	-	204.4	156.3	124.0	101.4	86.9	76.5	56.9	46.0	32.5
1.80	-	-	-	225.9	172.5	137.0	110.5	93.7	81.8	59.5	47.5	33.5
1.75	-	-	-	235.8	179.6	143.0	114.5	96.4	83.8	60.4	47.9	33.7
1.70	305.2	285.1	262.4	245.7	185.2	147.0	117.5	98.8	85.8	61.3	48.3	34.0
1.67	310.1	296.2	268.1	249.0	189.0	150.0	119.2	99.8	86.3	61.6	48.5	34.1
1.65	316.7	300.7	272.8	250.6	192.0	152.0	120.4	100.6	86.8	61.9	48.7	34.3

END POINT VOLTS/CELL	Constant Power Discharge Table - Watts Per Cell @ 25°C (77°F)											
	Operating Time to End Point Voltage											
	5 min	10 min	15 min	30 min	60 min	2 hr	3 hr	5 hr	8 hr	10 hr	12 hr	20 hr
1.90	103.4	79.3	62.7	38.4	23.0	12.4	8.6	5.5	3.6	3.0	2.5	1.6
1.85	118.6	90.9	71.8	42.6	25.2	13.5	9.4	6.0	3.9	3.2	2.8	1.7
1.80	128.4	98.5	77.8	45.3	26.4	14.1	9.9	6.2	4.1	3.3	2.8	1.7
1.75	134.1	102.7	80.0	46.7	26.8	14.4	10.0	6.3	4.1	3.3	2.9	1.8

### UPS 12-2200 PLP

END POINT VOLTS/CELL	Constant Power Discharge Table - Watts Per Cell @ 25°C (77°F)											
	Operating Time to End Point Voltage											
	2min	3min	4min	5 min	10 min	15 min	20 min	25 min	30 min	45 min	60 min	90 min
1.85	-	-	-	304.9	229.5	184.9	153.8	133.4	118.8	90.6	74.8	53.9
1.80	-	-	-	336.7	255.4	202.2	166.1	142.7	126.1	95.2	78.0	56.1
1.75	-	-	-	354.8	267.3	211.0	172.3	147.4	129.7	96.7	78.5	56.9
1.70	450.8	430.7	388.3	366.4	273.6	217.0	176.1	149.8	131.3	97.7	79.2	57.3
1.67	460.5	438.7	395.1	371.4	277.4	220.0	178.0	151.1	132.2	98.3	79.6	57.5
1.65	463.3	441.0	400.2	374.8	280.0	222.0	179.3	152.0	132.9	98.6	79.8	57.7

END POINT VOLTS/CELL	Constant Current Discharge Table - Amps @ 25°C (77°F)											
	Operating Time to End Point Voltage											
	EPV	5 min	10 min	15 min	30 min	60 min	2 hr	3 hr	5 hr	8 hr	10 hr	12 hr
1.90	153.3	119.2	95.6	60.8	35.0	19.0	13.3	8.4	5.5	4.5	3.8	2.4
1.85	176.4	130.9	106.9	66.9	38.6	20.8	14.5	9.2	6.0	4.8	4.2	2.6
1.80	189.7	139.7	115.0	71.0	39.8	21.4	15.0	9.5	6.3	5.1	4.4	2.7
1.75	197.4	145.0	119.6	72.4	40.7	21.9	15.3	9.7	6.3	5.2	4.4	2.8

### UPS 12-3300 PLP

END POINT VOLTS/CELL	Constant Power Discharge Table - Watts Per Cell @ 25°C (77°F)											
	Operating Time to End Point Voltage											
	2min	3min	4min	5 min	10 min	15 min	20 min	25 min	30 min	45 min	60 min	90 min
1.85	-	-	-	465.3	351.9	278.0	230.4	199.2	176.9	134.5	110.7	80.5
1.80	-	-	-	510.2	383.8	304.8	249.7	213.9	188.6	141.9	115.9	83.9
1.75	-	-	-	534.1	401.0	314.3	257.2	220.2	194.0	145.4	118.5	85.5
1.70	668.0	625.8	573.1	543.4	412.3	321.5	263.2	225.4	198.6	147.0	118.8	85.9
1.67	679.2	636.3	582.7	552.4	419.2	326.4	266.6	227.8	200.4	147.7	119.0	86.2
1.65	683.1	640.0	586.1	555.7	423.9	329.4	269.3	230.3	202.7	148.7	119.4	86.5

END POINT VOLTS/CELL	Constant Current Discharge Table - Amps @ 25°C (77°F)											
	Operating Time to End Point Voltage											
	5 min	10 min	15 min	30 min	60 min	2 hr	3 hr	5 hr	8 hr	10 hr	12 hr	20 hr
1.90	200.2	170.7	135.2	87.3	53.4	29.4	20.7	13.4	8.7	7.1	6.0	3.7
1.85	248.3	185.0	150.5	95.9	58.0	31.8	22.4	14.5	9.4	7.6	6.5	4.0
1.80	267.8	196.8	162.3	101.8	60.7	33.1	23.3	15.1	9.8	7.9	6.7	4.1
1.75	277.5	203.2	168.2	105.4	62.0	33.8	23.7	15.4	9.9	8.0	6.8	4.2

# TOP TERMINAL



## UPS 12-3800 PLP

END POINT VOLTS/CELL	Constant Power Discharge Table - Watts Per Cell @ 25°C (77°F)											
	Operating Time to End Point Voltage											
	2min	3min	4min	5 min	10 min	15 min	20 min	25 min	30 min	45 min	60 min	90 min
1.85	-	-	-	531.0	397.4	310.9	262.1	229.7	206.2	158.6	131.6	93.4
1.80	-	-	-	580.7	441.9	339.9	283.3	245.9	219.2	167.0	137.7	97.4
1.75	-	-	-	614.3	467.9	359.6	297.3	256.5	227.4	171.3	140.1	98.8
1.70	764.0	719.2	663.2	632.1	481.9	370.0	304.5	261.8	231.5	174.3	142.5	100.2
1.67	777.2	731.6	674.6	643.0	492.0	376.4	309.0	265.1	234.0	175.9	143.7	100.8
1.65	786.1	740.0	682.4	650.4	498.9	380.7	312.0	267.3	235.7	177.3	144.9	101.5

END POINT VOLTS/CELL	Constant Current Discharge Table - Amps @ 25°C (77°F)											
	Operating Time to End Point Voltage											
	5 min	10 min	15 min	30 min	60 min	2 hr	3 hr	5 hr	8 hr	10 hr	12 hr	20 hr
1.90	217.8	191.5	159.6	103.3	61.7	33.7	23.6	15.1	10.0	8.3	7.0	4.5
1.85	291.3	223.0	178.0	114.5	67.4	36.7	25.7	16.4	10.9	8.9	7.6	4.9
1.80	316.8	241.4	192.0	122.5	69.3	37.8	26.5	17.0	11.3	9.3	7.9	5.1
1.75	330.3	251.3	200.2	125.5	71.0	38.6	27.1	17.3	11.4	9.4	8.0	5.1

## UPS 12-4000 PLP

END POINT VOLTS/CELL	Constant Power Discharge Table - Watts Per Cell @ 25°C (77°F)											
	Operating Time to End Point Voltage											
	2min	3min	4min	5 min	10 min	15 min	20 min	25 min	30 min	45 min	60 min	90 min
1.85	-	-	-	544.7	405.5	338.8	286.4	251.4	226.0	175.4	146.5	104.3
1.80	-	-	-	611.7	454.6	372.8	311.0	270.2	241.0	185.4	153.9	109.2
1.75	-	-	-	636.9	475.7	386.2	323.7	282.2	252.4	191.3	157.2	111.4
1.70	815.0	773.8	722.3	660.4	495.1	399.9	333.3	289.4	257.9	194.0	158.5	112.3
1.67	829.4	793.8	749.3	667.4	508.8	407.8	339.0	293.8	261.4	195.6	159.3	112.8
1.65	833.0	800.0	758.7	675.7	514.3	411.7	342.2	296.4	263.7	196.7	159.8	113.1

END POINT VOLTS/CELL	Constant Current Discharge Table - Amps @ 25°C (77°F)											
	Operating Time to End Point Voltage											
	5 min	10 min	15 min	30 min	60 min	2 hr	3 hr	5 hr	8 hr	10 hr	12 hr	20 hr
1.90	214.4	201.5	162.3	109.9	68.2	36.9	25.8	16.4	10.8	8.9	7.6	4.8
1.85	295.7	236.8	189.0	122.2	74.8	40.4	28.2	17.9	11.8	9.7	8.2	5.2
1.80	346.5	262.6	210.0	131.0	78.7	42.3	29.4	18.6	12.2	10.0	8.5	5.4
1.75	363.0	277.5	220.0	134.8	79.7	42.9	29.8	19.0	12.5	10.2	8.6	5.5

## UPS 12-4700 PLP

END POINT VOLTS/CELL	Constant Power Discharge Table - Watts Per Cell @ 25°C (77°F)											
	Operating Time to End Point Voltage											
	2min	3min	4min	5 min	10 min	15 min	20 min	25 min	30 min	45 min	60 min	90 min
1.85	-	-	-	549.4	465.1	378.1	315.7	274.6	245.0	189.1	157.3	109.9
1.80	-	-	-	660.7	519.4	415.2	343.4	296.4	262.9	200.6	165.6	115.3
1.75	-	-	-	723.8	566.6	441.1	362.4	311.1	274.7	207.0	169.3	117.7
1.70	984.1	912.3	822.5	755.0	594.8	460.1	375.2	320.3	281.5	210.4	171.2	118.9
1.67	1016.3	942.1	849.3	779.6	612.3	475.1	384.7	326.6	285.8	212.6	172.3	119.6
1.65	1024.8	950.0	856.5	786.2	624.2	479.1	388.2	329.8	288.7	214.1	173.2	120.1

END POINT VOLTS/CELL	Constant Current Discharge Table - Amps @ 25°C (77°F)											
	Operating Time to End Point Voltage											
	EPV	5 min	10 min	15 min	30 min	60 min	2 hr	3 hr	5 hr	8 hr	10 hr	12 hr
1.90	267.5	238.1	187.5	119.2	73.8	39.7	27.6	17.5	11.5	9.4	8.0	5.1
1.85	358.9	276.7	217.5	132.9	81.5	43.6	30.3	19.1	12.5	10.2	8.7	5.5
1.80	397.7	305.2	241.0	142.7	85.7	45.8	31.7	19.9	13.0	10.6	9.0	5.7
1.75	424.5	325.8	257.3	148.8	86.6	46.9	32.4	20.3	13.2	10.8	9.1	5.7

## UPS 12-4800 PLP

END POINT VOLTS/CELL	Constant Power Discharge Table - Watts Per Cell @ 25°C (77°F)											
	Operating Time to End Point Voltage											
	2min	3min	4min	5 min	10 min	15 min	20 min	25 min	30 min	45 min	60 min	90 min
1.85	-	-	-	537.2	440.4	376.5	323.0	288.9	263.8	208.2	176.0	129.4
1.80	-	-	-	631.1	512.5	426.0	359.0	316.8	286.1	222.4	186.0	136.8
1.75	-	-	-	684.2	551.9	454.0	379.0	332.0	298.0	229.0	190.0	138.5
1.70	919.7	866.7	800.5	741.2	593.5	483.7	400.3	348.2	310.8	235.9	194.0	140.1
1.67	970.3	914.5	844.7	782.0	614.4	500.0	411.4	356.4	317.0	238.6	195.0	140.7
1.65	1008.0	950.0	877.5	812.4	633.2	510.9	419.0	362.0	321.3	240.6	196.0	141.2

END POINT VOLTS/CELL	Constant Current Discharge Table - Amps @ 25°C (77°F)											
	Operating Time to End Point Voltage											
	5 min	10 min	15 min	30 min	60 min	2 hr	3 hr	5 hr	8 hr	10 hr	12 hr	20 hr
1.90	214.2	212.4	188.8	131.0	80.0	46.4	33.4	22.0	14.8	12.0	10.2	6.4
1.85	295.0	269.1	220.2	147.6	91.5	51.6	36.9	24.2	16.3	13.3	11.3	7.1
1.80	383.7	312.2	249.6	160.0	97.2	54.4	38.7	25.2	16.9	13.8	11.7	7.3
1.75	422.3	334.0	266.5	166.3	98.5	55.0	39.4	25.8	17.3	14.1	11.9	7.5

## TOP TERMINAL



### UPS 12-5400 PLP

Constant Power Discharge Table - Watts Per Cell @ 25°C (77°F)												
END POINT VOLTS/CELL	Operating Time to End Point Voltage											
	2min	3min	4min	5 min	10 min	15 min	20 min	25 min	30 min	45 min	60 min	90 min
1.85	-	-	-	574.7	485.6	408.4	350.6	311.5	282.8	224.4	190.4	135.6
1.80	-	-	-	698.8	570.4	467.8	393.2	343.7	307.9	239.8	200.8	142.3
1.75	-	-	-	782.7	625.7	508.8	422.0	365.0	324.2	248.9	206.3	145.9
1.70	979.1	940.0	891.1	841.8	664.9	534.2	439.4	377.5	333.6	253.4	208.5	147.2
1.67	1027.2	986.2	934.9	883.1	693.3	550.2	453.9	391.0	346.2	258.2	209.7	148.0
1.65	1062.5	1020.0	966.9	913.4	704.2	561.2	461.5	396.5	350.3	259.8	210.2	148.5

Constant Current Discharge Table - Amps @ 25°C (77°F)												
END POINT VOLTS/CELL	Operating Time to End Point Voltage											
	5 min	10 min	15 min	30 min	60 min	2 hr	3 hr	5 hr	8 hr	10 hr	12 hr	20 hr
1.90	284.9	246.3	206.9	145.3	88.4	51.7	36.4	23.6	15.4	12.5	10.6	6.7
1.85	350.2	294.6	246.6	162.4	97.3	57.0	39.7	25.2	16.6	13.6	11.6	7.3
1.80	423.8	342.0	279.0	176.5	103.2	59.9	41.6	26.3	17.3	14.1	12.0	7.6
1.75	467.3	363.2	299.0	182.9	106.3	61.4	42.6	26.8	17.6	14.4	12.2	7.7

### UPS12-6300 PLP

Constant Power Discharge Table - Watts Per Cell @ 25°C (77°F)												
END POINT VOLTS/CELL	Operating Time to End Point Voltage											
	2min	3min	4min	5 min	10 min	15 min	20 min	25 min	30 min	45 min	60 min	90 min
1.85	-	-	-	804.7	647.9	532.5	443.0	377.6	336.4	245.2	195.9	140.0
1.80	-	-	-	933.3	724.0	583.7	480.2	405.5	358.8	258.1	204.2	145.6
1.75	-	-	-	992.7	771.0	602.0	499.9	419.3	369.2	265.0	209.5	149.2
1.70	1269.9	1196.8	1105.4	1023.3	787.5	625.5	508.5	424.9	373.1	267.7	211.5	150.5
1.67	1281.6	1207.8	1115.5	1032.7	796.3	630.1	512.4	428.2	376.1	269.7	213.0	151.5
1.65	1300.8	1225.8	1132.1	1048.0	803.8	636.2	516.4	430.9	378.0	270.9	213.9	152.1

Constant Current Discharge Table - Amps @ 25°C (77°F)												
END POINT VOLTS/CELL	Operating Time to End Point Voltage											
	5 min	10 min	15 min	30 min	60 min	2 hr	3 hr	5 hr	8 hr	10 hr	12 hr	20 hr
1.90	260.7	256.7	217.1	146.8	88.1	49.1	34.4	21.7	14.1	11.5	9.7	6.1
1.85	368.4	312.8	253.7	167.9	98.2	54.3	38.0	24.0	15.5	12.6	10.6	6.6
1.80	455.9	362.4	292.0	185.0	104.2	57.2	40.2	25.2	16.2	13.2	11.1	6.9
1.75	495.3	389.9	311.3	189.5	106.4	58.1	40.8	25.5	16.4	13.3	11.2	7.0

## FRONT TERMINA



### UPS 12-4200F PLP

Constant Power Discharge Table - Watts Per Cell @ 25°C (77°F)												
END POINT VOLTS/CELL	Operating Time to End Point Voltage											
	2min	3min	4min	5 min	10 min	15 min	20 min	25 min	30 min	45 min	60 min	90 min
1.85	-	-	-	558.5	421.8	331.3	279.0	240.5	216.0	162.4	132.6	95.4
1.80	-	-	-	635.2	466.2	366.2	306.5	262.7	235.0	173.6	140.0	100.5
1.75	-	-	-	670.0	491.7	386.1	321.2	273.8	244.0	178.3	142.7	102.4
1.70	844.2	795.5	734.8	701.2	514.6	404.1	334.4	283.8	252.0	182.6	145.3	104.2
1.67	856.7	807.4	745.7	711.6	522.3	410.1	339.5	288.2	256.0	184.8	146.6	105.1
1.65	867.2	817.2	754.8	720.3	528.6	415.1	344.1	292.5	260.0	186.9	147.9	106.0

Constant Current Discharge Table - Amps @ 25°C (77°F)												
END POINT VOLTS/CELL	Operating Time to End Point Voltage											
	5 min	10 min	15 min	30 min	60 min	2 hr	3 hr	5 hr	8 hr	10 hr	12 hr	20 hr
1.90	209.0	190.0	151.8	99.6	60.6	35.0	25.4	16.7	10.8	8.8	7.5	4.7
1.85	282.9	224.1	178.0	113.9	66.8	38.4	27.7	18.5	12.0	9.7	8.2	5.1
1.80	329.3	253.3	199.6	124.3	71.0	40.5	29.2	19.4	12.6	10.2	8.6	5.3
1.75	355.0	269.4	211.5	127.6	73.0	41.5	29.8	19.8	12.8	10.4	8.8	5.5



# FRONT TERMINA

## UPS 12-6200F PLP

END POINT VOLTS/CELL	Constant Power Discharge Table - Watts Per Cell @ 25°C (77°F)											
	Operating Time to End Point Voltage											
	2min	3min	4min	5 min	10 min	15 min	20 min	25 min	30 min	45 min	60 min	90 min
1.85	-	-	-	744.5	622.5	501.6	431.7	379.0	344.9	261.6	215.0	156.8
1.80	-	-	-	937.4	694.5	553.2	472.5	412.2	373.4	281.2	230.0	166.2
1.75	-	-	-	988.2	742.6	583.1	494.2	428.2	386.0	288.0	234.0	169.0
1.70	1234.6	1163.5	1074.6	1025.5	770.7	605.1	508.0	436.4	391.0	291.4	236.5	170.7
1.67	1255.0	1182.7	1092.4	1042.5	783.4	615.1	513.8	439.4	392.5	292.8	237.8	171.5
1.65	1265.2	1192.3	1101.2	1050.9	789.8	620.1	516.8	441.2	393.5	293.4	238.2	172

END POINT VOLTS/CELL	Constant Current Discharge Table - Amps @ 25°C (77°F)											
	Operating Time to End Point Voltage											
	5 min	10 min	15 min	30 min	60 min	2 hr	3 hr	5 hr	8 hr	10 hr	12 hr	20 hr
1.90	273.9	273.9	231.4	157.2	97.0	55.3	39.6	26.0	17.1	13.9	11.8	7.4
1.85	378.0	340.4	272.3	180.5	109.0	61.8	44.0	28.7	19.0	15.5	13.1	8.1
1.80	482.1	383.0	312.0	197.0	117.5	65.8	46.7	30.4	20.1	16.3	13.8	8.5
1.75	551.1	408.0	330.0	201.0	120.0	67.0	47.5	30.9	20.3	16.5	13.9	8.6

## UPS 12-6800F PLP

END POINT VOLTS/CELL	Constant Power Discharge Table - Watts Per Cell @ 25°C (77°F)											
	Operating Time to End Point Voltage											
	2min	3min	4min	5 min	10 min	15 min	20 min	25 min	30 min	45 min	60 min	90 min
1.85	-	-	-	758.4	649.2	545.0	476.6	424.2	390.0	300.0	249.0	181.5
1.80	-	-	-	964.3	730.8	597.2	520.0	461.3	423.0	323.1	266.8	193.2
1.75	-	-	-	1035.9	791.7	630.1	544.1	479.1	437.0	330.8	271.5	196.5
1.70	1324.3	1248.0	1152.7	1100.0	852.2	669.1	570.2	496.4	449.0	336.0	273.5	198.6
1.67	1365.9	1287.2	1188.9	1134.6	878.9	700.1	583.0	503.6	453.0	338.1	274.7	199.3
1.65	1385.7	1305.9	1206.1	1151.0	891.7	703.1	590.1	508.7	457.0	339.7	275.2	199.7

END POINT VOLTS/CELL	Constant Current Discharge Table - Amps @ 25°C (77°F)											
	Operating Time to End Point Voltage											
	5 min	10 min	15 min	30 min	60 min	2 hr	3 hr	5 hr	8 hr	10 hr	12 hr	20 hr
1.90	280.4	280.4	252.5	172.0	107.0	64.1	46.0	30.4	20.1	16.4	13.9	8.7
1.85	394.4	367.2	296.5	199.0	121.0	71.4	51.1	33.5	22.1	18.0	15.2	9.5
1.80	508.3	414.3	341.0	221.0	130.0	75.1	53.9	35.2	23.2	18.8	15.9	9.9
1.75	586.2	451.9	363.0	230.0	134.4	76.6	54.6	35.7	23.6	19.2	16.2	10.1

## UPS 12-8000F PLP

END POINT VOLTS/CELL	Constant Power Discharge Table - Watts Per Cell @ 25°C (77°F)											
	Operating Time to End Point Voltage											
	2min	3min	4min	5 min	10 min	15 min	20 min	25 min	30 min	45 min	60 min	90 min
1.85	-	-	-	846.0	776.8	643.1	568.8	511.3	473.4	366.7	305.9	219.9
1.80	-	-	-	1075.6	871.2	706.0	622.5	558.1	515.8	394.0	325.4	232.3
1.75	-	-	-	1224.4	948.9	770.1	661.3	590.1	543.5	409.9	335.6	238.8
1.70	1549.7	1460.4	1348.8	1287.2	1009.9	800.6	688.9	609.9	558.5	417.3	339.4	241.3
1.67	1622.7	1529.3	1412.4	1347.9	1044.6	830.1	713.0	624.8	567.9	422.0	341.9	242.8
1.65	1630.3	1536.4	1419.0	1354.2	1049.5	834.0	717.5	629.7	573.0	424.7	343.4	244.0

END POINT VOLTS/CELL	Constant Current Discharge Table - Amps @ 25°C (77°F)											
	Operating Time to End Point Voltage											
	5 min	10 min	15 min	30 min	60 min	2 hr	3 hr	5 hr	8 hr	10 hr	12 hr	20 hr
1.90	339.6	339.6	294.9	217.9	138.4	82.3	60.0	39.1	25.9	21.1	17.8	10.9
1.85	463.9	440.5	360.5	253.1	156.0	90.1	65.2	42.3	27.8	22.7	19.2	11.9
1.80	588.1	506.2	411.3	278.0	164.0	94.0	67.5	43.8	29.1	23.8	20.1	12.4
1.75	675.6	529.6	437.7	292.8	169.5	96.2	68.4	44.4	29.7	24.2	20.5	12.6

## UPS 12-9200F PLP

END POINT VOLTS/CELL	Constant Power Discharge Table - Watts Per Cell @ 25°C (77°F)											
	Operating Time to End Point Voltage											
	2min	3min	4min	5 min	10 min	15 min	20 min	25 min	30 min	45 min	60 min	90 min
1.85	-	-	-	1012.3	933.0	759.8	649.5	566.8	513.7	384.4	313.0	229.6
1.80	-	-	-	1297.6	1044.5	850.6	720.9	624.5	563.0	415.1	334.4	243.6
1.75	-	-	-	1400.5	1114.9	907.9	763.7	657.3	589.7	431.2	345.3	250.1
1.70	1795.0	1691.6	1562.4	1491.0	1186.9	983.1	801.7	681.6	606.1	442.0	353.2	254.7
1.67	1857.3	1750.4	1616.6	1542.8	1228.2	1000.2	823.7	696.0	616.2	447.7	356.9	256.7
1.65	1884.2	1775.6	1640.0	1565.1	1245.9	1014.5	834.1	703.7	622.3	451.4	359.4	257.9

END POINT VOLTS/CELL	Constant Current Discharge Table - Amps @ 25°C (77°F)											
	Operating Time to End Point Voltage											
	5 min	10 min	15 min	30 min	60 min	2 hr	3 hr	5 hr	8 hr	10 hr	12 hr	20 hr
1.90	373.0	373.0	345.0	238.5	148.5	84.7	60.6	39.1	25.6	20.9	17.8	11.1
1.85	521.7	480.0	393.0	270.0	168.0	96.1	67.9	43.2	28.1	22.9	19.4	12.0
1.80	670.4	550.0	448.0	300.0	181.1	102.0	71.3	45.0	29.3	23.9	20.2	12.5
1.75	765.0	600.0	490.0	315.0	187.5	104.1	72.1	45.4	29.7	24.3	20.6	12.7



# TECHNOLOGIES

## Contact us

### Headquarters

C&D Technologies, Inc.  
200 Precision Road  
Horsham, PA 19044 USA

### Europe

C&D Technologies (UK) Limited  
Unit 25, Romsey Industrial Estate, Greatbridge Road  
ROMSEY, Hampshire, SO51 0HR, UK  
Office: +44 (0) 1794 518 173  
E-mail: Gdailly@cdtrojan.com

### Middle East & Africa

C&D TECHNOLOGIES (UK) LIMITED  
LOB 15 – OFFICE 413  
PO BOX 263116  
JEBEL ALI FREE ZONE  
DUBAI – UNITED ARAB EMIRATES  
PH: +971 5045 494 79  
E-mail: phockings@cdtrojan.com

### C&D Tech Power Solutions (India) Private Limited

NEW NUMBER 39, OLD NUMBER 15, GROUND FLOOR, AGASTHIAR STREET,  
EAST TAMBARAM, CHENNAI 600059.  
Tel:(91) 98400 86199  
E-mail: ishantharaj@cdtrojan.com.cn

### C&D Technologies (Hong Kong) Ltd.

Tel: (852) 2119 9870  
Fax: (852) 2117 0342  
E-mail: Bhui@cdtrojan.com

### C&D Tech (Singapore) Pte Ltd.

Tel: (65) 6291 1031  
Fax: (65) 6291 0767  
E-mail: Bhui@cdtrojan.com

### C&D Trojan (Shanghai) Energy Technologies Co., Ltd.

Tel: 400-678-3721

### C&D Trojan (Shanghai) Power Technologies Co., Ltd.

No.55 Liandu Road,Spark Development Zone,Shanghai, China  
Tel: (86) 21 3711 1222

### C&D Jiangsu Technologies Co., Ltd.

Circular Economy Industrial Park  
Pizhou High-tech Industrial Development Zone,  
Jiangsu Prvince China 221300  
Tel: (86) 516 8687 9857

### Website

[www.cdtrojan.cn](http://www.cdtrojan.cn)

China Service Hotline: 400-678-3721

C&D reserves the right to revise the data and information provided in this catalogue.